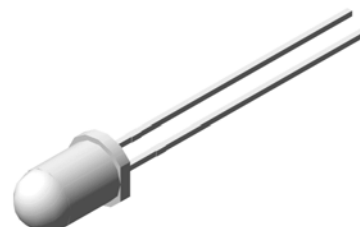


5mm Round Super Bright LED

VT BA48

Description

These series high brightness Bluish-green emitting LED are made from the most efficient InGaN technology. Its chip material is of InGaN technology, able to reach high light output efficiency. These series of LED come in moisture resistance water clear lens while offering 30 degree viewing angles. The most suitable for traffic light signal application.




Applications

- Single or dual color graphic signs
- Message boards
- Variable message signs
- Commercial outdoor advertising



Electronic Optical Characteristics (at 20mA):

Part Number	Emitted Color	λ (nm)		Lens Color	Iv(mcd)		View Angle (2 θ 1/2)	VF(V)	
		λ_d	λ_p		Min.	Typ.		Typ.	Max.
VT BA48	Bluish-green 	505	502	Clear	4500	7500	30	3.2	3.6

Absolute Maximum Ratings (at Ta=25°C)

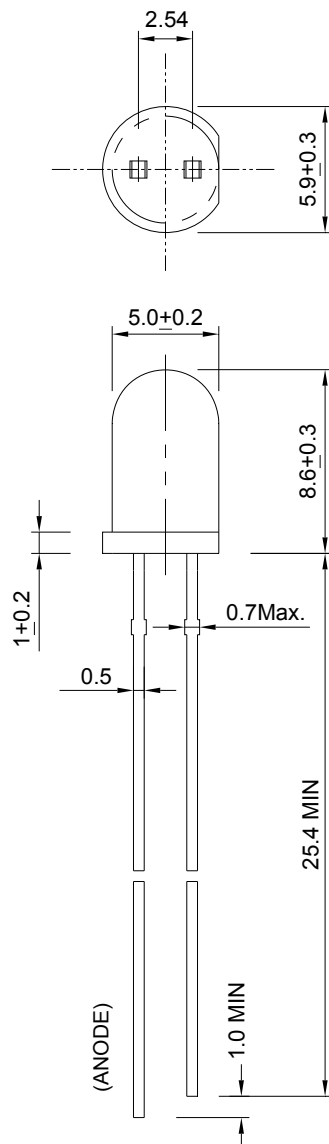
P _D (mW)	I _{FP} (mA)	I _F (mA)	T _{sol} (°C)	I _R (μ A)@V _R =5V	T _{opr} (°C)	T _{stg} (°C)
120	100*	30	260 \pm 5 for 5 sec	50	-40~+85	-40+100

Note: Please take note the Absolute Maximum Rating values. Any operation beyond the specified ratings in this table will result degradation of LED life-span and may cause LED to fail.

* I_{FP}: Peak Forward Current under 1/10 duty, 1KHz condition

Package Dimension:

unit: mm



Notes:

1. All dimensions are millimeters.
2. Dimensional tolerance is $\pm 0.2 \text{ mm}$ unless otherwise specified.
3. Epoxy meniscus under flange is 1.5 mm max.
4. Specifications are subject to change without notice.