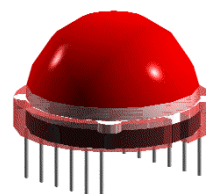


20mm Round PCB LED

VT G7A6.30

Description

The major breakthrough in VT G7A6 series is red color emit. The dice used in this series is AlGaInP rather than the conventional GaP and GaAsP/GaP. The advantages of AlGaInP are low power consumption and obtaining high luminous intensity under low current driving condition.



Features

- High reliability LED package
- Available in full selection of colors
- Luminous intensity categorized for each tube
- High intensity under low current condition
- AllnGaP dice technology with color diffuse lens



Electronic Optical Characteristics (@ 20mA):

Part Number	Emitted Color	λ (nm)		Lens Color	Iv(mcd)		View Angle (2 θ 1/2)	VF(V)	
		λ_d	λ_p		Min.	Typ.		Typ.	Max.
VT G7A6.30	Red 	624	632	Diffuse	28	55	100	2.0	2.4

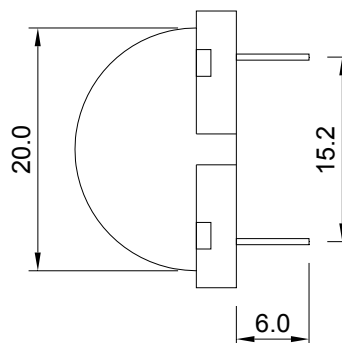
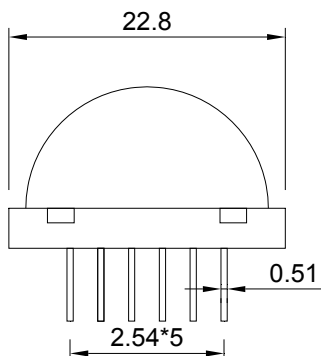
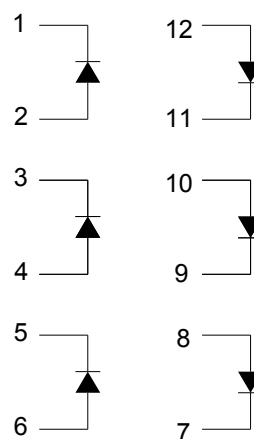
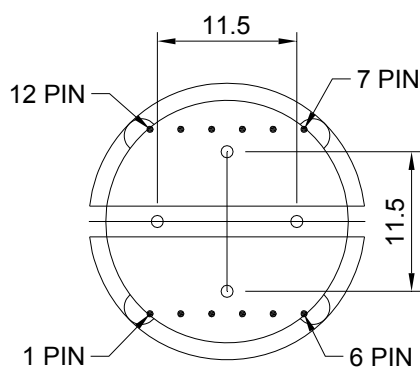
Absolute Maximum Ratings (@ Ta=25°C)

P _D (mW)	I _{FP} (mA)	I _F (mA)	T _{sol} (°C)	I _R (μ A)@V _R =5V	T _{opr} (°C)	T _{stg} (°C)
60	100*	25	260 \pm 5 for 5 sec.	10	-40~+85	-40~+100

Note: Please take note the Absolute Maximum Rating values. Any operation beyond the specified ratings in this table will result degradation of LED life-span and may cause LED to fail.

Package Dimension:

unit: mm



Notes:

1. All dimensions are millimeters.
2. Dimensional tolerance is +/- 0.2mm unless otherwise specified.
3. Specifications are subject to change without notice.