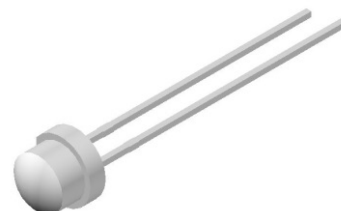


4.8mm Round Super Bright LED

VT H1A8

Description

These series high brightness Warm White emitting LEDs are made from the most efficient InGaN technology. Its chip material is of InGaN technology, able to reach high light output efficiency. Other than bulk packing, tape and reel is available. Changes in viewing angle, luminous intensity and lens color is acceptable.



Applications

- Single or dual color graphic signs
- Commercial use
- Advertising Signs
- Backlight illumination

RoHS



Electronic Optical Characteristics (at 20mA):

Part Number	Emitted Color	C.C		Lens Color	Iv(mcd)		View Angle (2θ1/2)	VF(V)	
		X	Y		Min.	Typ.		Typ.	Max.
VT H1A8	Warm White	0.40	0.45	Clear	700	1000	100	3.2	3.8

Absolute Maximum Ratings (at Ta=25°C)

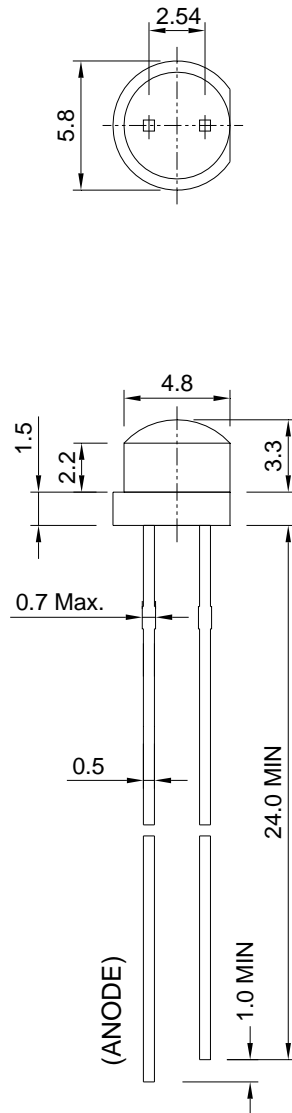
P _D (mW)	I _{FP} (mA)	I _F (mA)	T _{sol} (°C)	I _R (uA)@V _R =5V	T _{opr} (°C)	T _{stg} (°C)
90	100*	30	260±5 for 5 sec	50	-40~+85	-40+100

Note: Please take note the Absolute Maximum Rating values. Any operation beyond the specified ratings in this table will result degradation of LED life-span and may cause LED to fail.

* I_{FP}: Peak Forward Current under 1/10 duty, 1KHz condition

Package Dimension:

unit: mm



Notes:

1. All dimensions are millimeters.
2. Dimensional tolerance is ± 0.2 mm unless otherwise specified.
3. Epoxy meniscus under flange is 1.5 mm max.
4. Specifications are subject to change without notice.