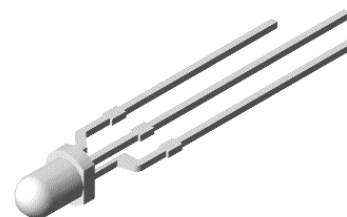


## 3mm Round Bi-Color LED C.C.

### VT 3L67

#### Description

The VT 3L67 is 3mm Bi-Color LED Lamp. The chip material used in Red & Blue emitting is high efficiency AlGaInP & InGaN with brilliant light output. It has high reliability lead based package and available in full selection of colors, high intensity under low current condition. Other selection included common cathode or common anode and lead pitch is 2.54mm.





#### Applications

- TV Set
- Monitor
- Computer
- Telephone



#### Electronic Optical Characteristics at 20mA:

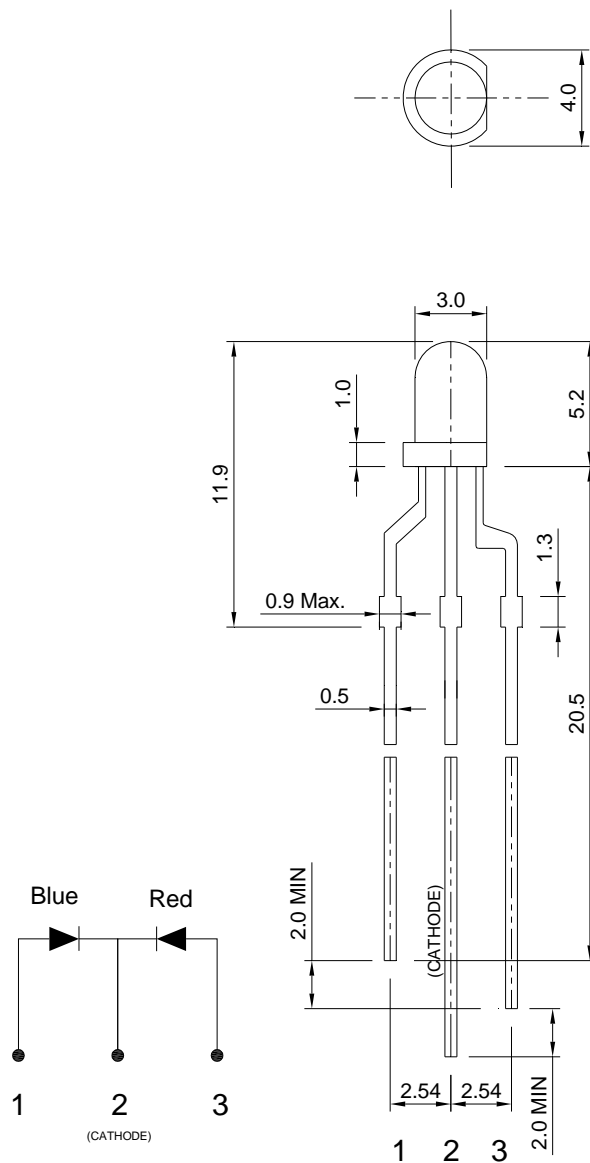
Part Number	Emitted Color	$\lambda$ (nm)		Iv(mcd)		VF(Volt)		View Angle (2 $\theta$ 1/2)	Lens
		$\lambda_d$	$\lambda_p$	Min	Typ.	Typ.	Max.		
VT 3L67	Red 	624	632	35	48	2.0	2.4	60	Milky
	Blue 	470	468	18	28	3.5	3.8		

#### Absolute Maximum Ratings (at Ta=25°C)

Emitted Color	P <sub>D</sub> (mW)	I <sub>F</sub> (mA)	T <sub>sol</sub> (°C)	I <sub>R</sub> (uA)@V <sub>R</sub> =5V	Topr(°C)	Tstg(°C)
Red	60	25	260+/-5 for 5 sec	10	-40~+85	-40~+90
Blue	90	25		50	-40~+85	-40~+90

Note: Please take note the Absolute Maximum Rating values. Any operation beyond the specify ratings in this table will result degradation of LED life- span and may cause LED to fail.

## Package Dimension:



unit: mm

## Notes:

1. All dimensions are millimeters.
2. Tolerance is  $\pm 0.2\text{mm}$  unless otherwise specified.
3. Specifications are subject to change without notice.