

## 4.8mm Round Super Bright LED

### VT H378.45

#### Description

These series high brightness TRUE GREEN emitting LEDs are made from the most efficient InGaN technology. Its chip material is of InGaN technology, able to reach high light output efficiency. Other than Bulk packing, tape and reel is available. Changes in viewing angle, luminous intensity and lens color is acceptable.




#### Applications

- Single or dual color graphic signs
- commercial use
- Advertising Signs
- Backlight illumination



#### Electronic Optical Characteristics (at 20mA):

Part Number	Emitted Color	$\lambda$ (nm)		Lens Color	Iv(mcd)		View Angle (2 $\theta$ 1/2)	VF(V)	
		$\lambda_d$	$\lambda_p$		Min.	Typ.		Typ.	Max.
VT H378.45	True-green 	525	518	Clear	710	1120	90	3.5	4.0

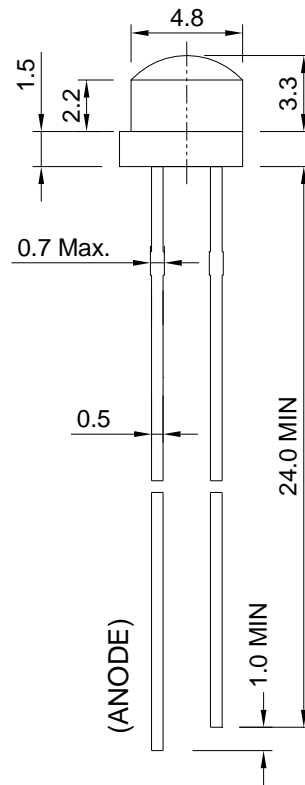
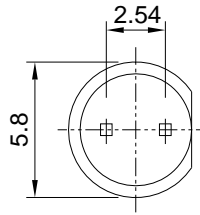
#### Absolute Maximum Ratings at Ta=25°C

Emitted Color	P <sub>D</sub> (mW)	I <sub>F</sub> (mA)	ESD(V)	I <sub>R</sub> (uA)@V <sub>R</sub> =5V	Topr(°C)	Tstg(°C)
True-green	100	30	1000	50	-40~+85	-40~+100

Note: Please take note the Absolute Maximum Rating values. Any operation beyond the specified ratings in this table will result degradation of LED life-span and may cause LED to fail.

## Package Dimension:

unit: mm



### Notes:

1. All dimensions are millimeters.
2. Dimensional tolerance is  $\pm 0.2$ mm unless otherwise specified.
3. Epoxy meniscus under flange is 1.5 mm max.
4. Specifications are subject to change without notice.