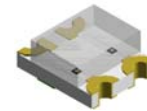


1916 Package Bi-Color SMD LED

VS RJF8

Description

This is Bi-Color SMD LED series with dimension 1.9 mm (L) * 1.6 mm (W) * 0.8 mm (H). The unique of these LED are made from AlGaInP chips that provide high luminous intensity at low driving current. The lens design provides 130 degree viewing angle and suitable for backlighting purpose. The available colors are Blue/True-green, Yellow/Red or even Red/Blue. Any color combinations specified by customers can be accepted.





Applications

- Industrial control systems signal indicator
- Automotive features
- Front panel indicator
- Status indication



Electronic Optical Characteristics (at 20mA):

Part Number	Color	λ (nm)		Iv(mcd)		VF(Volt)		View Angle	Lens
		λ_d	λ_p	Min.	Typ.	Typ.	Max.		
VS RJF8	Red 	624	632	36	60	2.0	2.4	130	Clear
	Green 	573	575	23	45	2.0	2.4		

Absolute Maximum Ratings (at Ta=25°C)

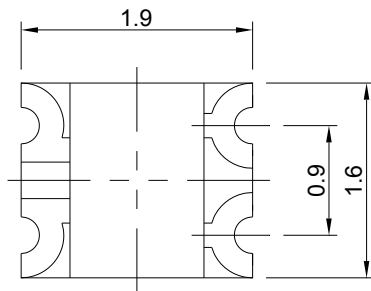
Emitted Color	P _D (mW)	I _F (mA)	I _{FP} (mA)	I _R (uA)@VR=5V	T _{opr} (°C)	T _{stg} (°C)
Red	60	25	60	10	-40~+85	-40~+90
Green	60	25	60	10	-40~+85	-40~+90


Note: Please take note the Absolute Maximum Rating values. Any operation beyond the specify ratings in this table will result degradation of LED life- span and may cause LED to fail.


* Peak forward current (duty 1/10 at 1KHz)

Package Dimension:

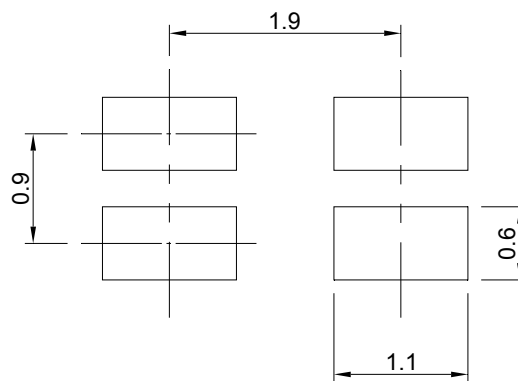
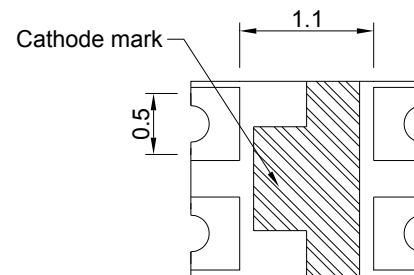
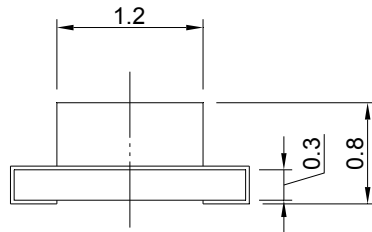
unit:mm



Red 

Yellow-green 

Polarity

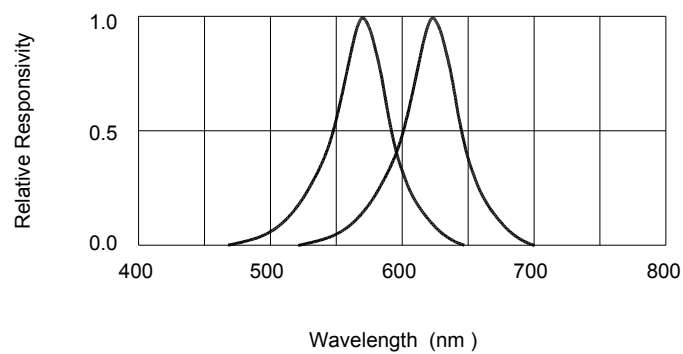
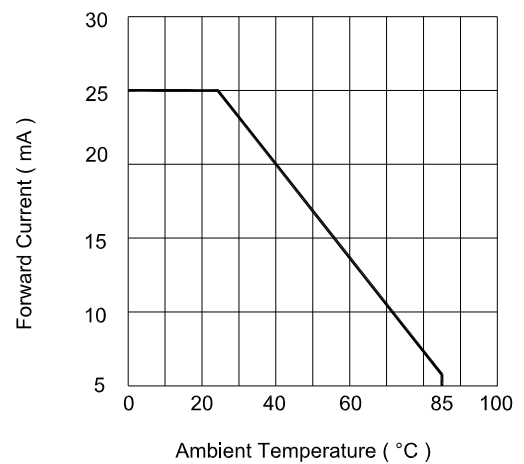
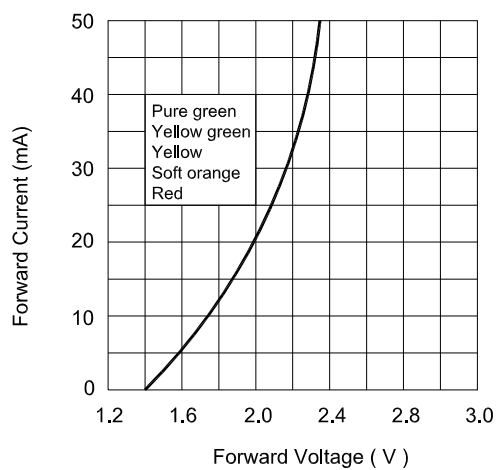
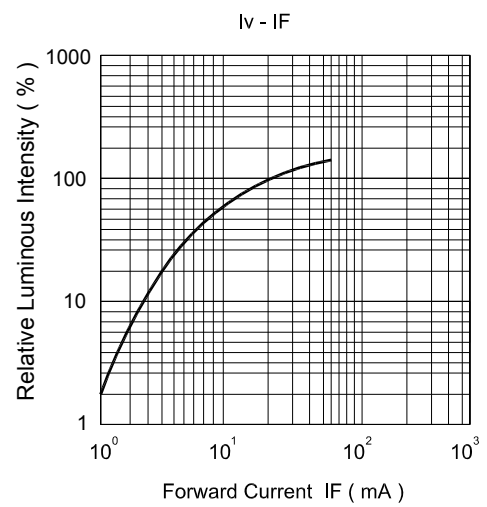
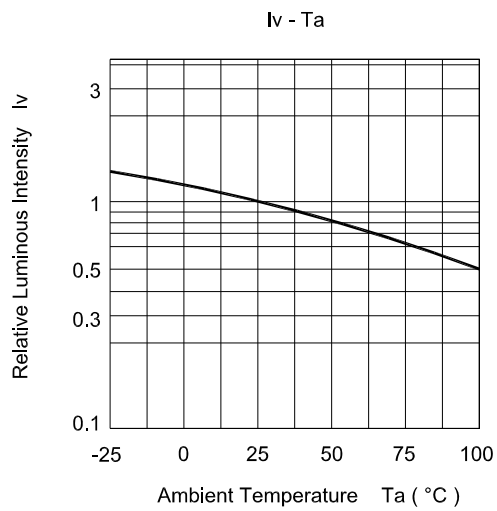


Recommended Soldering Pad

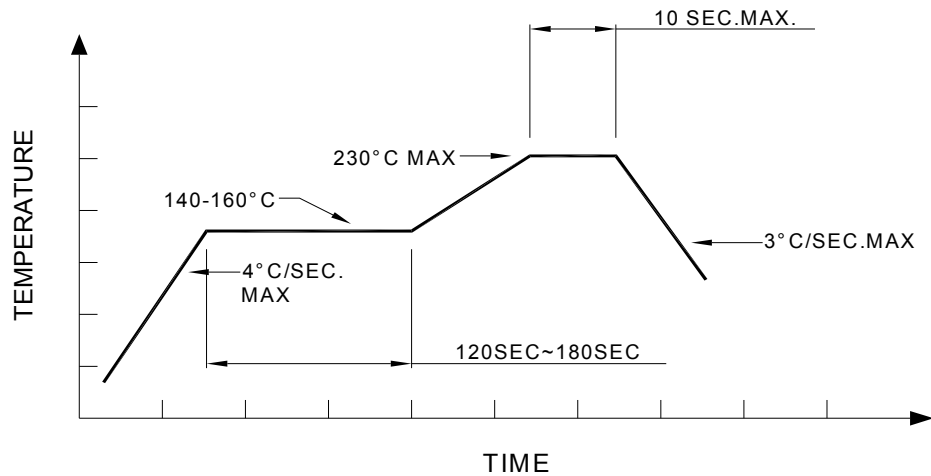
Notes:

1. All dimensions are millimeters.
2. Tolerance is $\pm 0.2\text{mm}$ unless otherwise specified.
3. Specifications are subject to change without notice.

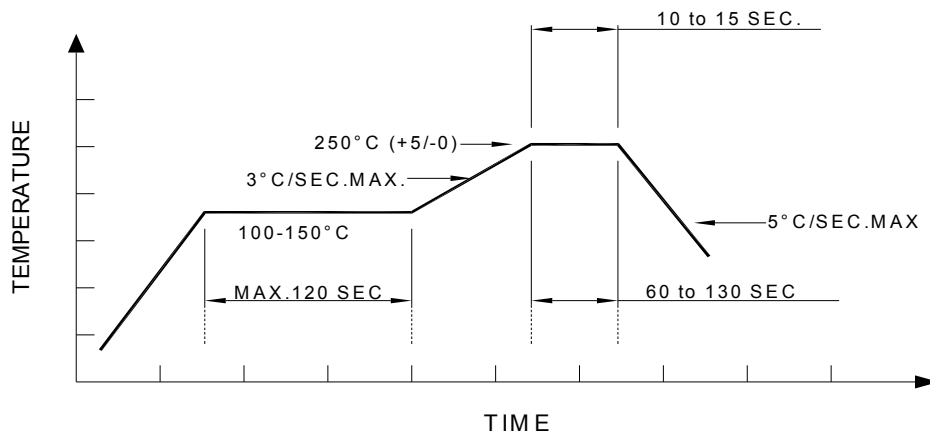
Optical Characteristics Curves



Recommended re-flow soldering profile:



Recommended Pb-free re-flow soldering profile:



Note:

All the specifications listed in this data sheet are suitable for general electronic equipment, office equipment and communication devices. Kindly consult Sales Representatives for specific reliabilities request, Forward Voltage, Luminous Intensity, Wavelength, Radiant Power or Viewing Angle.