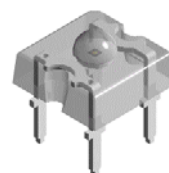


Super Flux LED with 60 View Angle

VT 6W68

Description

The series of LED is known as 'Super Flux' LED, able to withstand high drive current application. With special design Lead-Frame, the heat dissipation capability is increased. During high operating forward current, the luminous intensity is increase tremendously. As such, the overall cost is reduced with less number of LED being used. These LED can be used as Traffic Single Light, Signal Board or in Full Color applications.



Features

- High luminous flux output
- Supreme heat dissipation
- Package in tubes for automatic insertion
- Luminous and color categorized for each tube
- RoHS compliance

RoHS



Electronic Optical Characteristics (at 30mA):

Part Number	Emitted Color	C.C		Lens Color	Flux(mlm)		View Angle (2θ1/2)	VF(V)	
		X	Y		Min.	Typ.		Typ.	Max.
VT 6W68	White	0.30	0.29	Clear	715	1425	60	3.4	3.8

Absolute Maximum Ratings (at Ta=25°C)

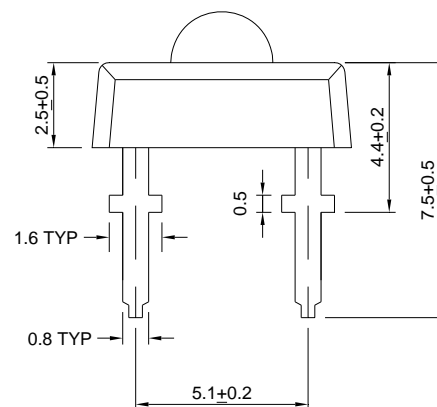
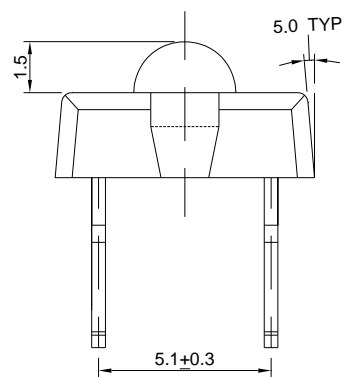
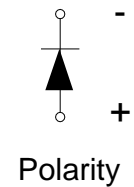
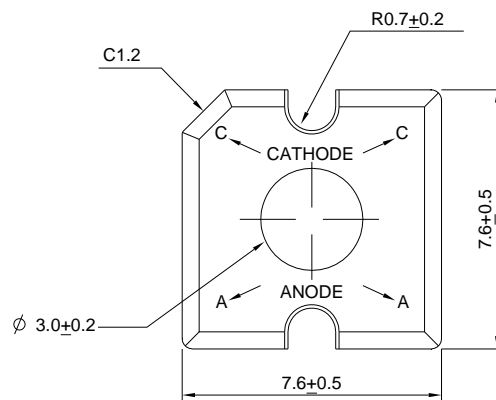
P _D (mW)	I _{FP} (mA)	I _F (mA)	T _{sol} (°C)	I _R (uA)@V _R =5V	T _{opr} (°C)	T _{stg} (°C)
100	100*	30	260 ± 5 for 5 sec.	50	-40~+85	-40~+100

Note: Please take note the Absolute Maximum Rating values. Any operation beyond the specify ratings in this table will result degradation of LED life-span and may cause LED to fail.

* I_{FP}: Peak Forward Current under 1/10 duty, 1KHz condition

Package Dimension:

unit:mm



Notes:

1. All dimensions are millimeters.
2. Dimensional tolerance is ± 0.2 mm unless otherwise specified.
3. Specifications are subject to change without notice.