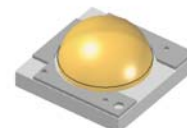


## High Power 3535 LED

### VH 3535W619

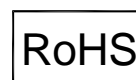
#### Description

These series high brightness White emitting LEDs are made from the most efficient InGaN technology in High driving current 350mA. The typical Optical efficiency output can be 115lm when driving at 350mA. Customized CCT is available, from 1550k to 7040k, view angles also available from 30, 60, 90 to 120 degree.



#### Applications

- Exterior and interior automotive illumination
- Commercial lighting
- Back lighting
- Traffic signaling
- Reading Light



#### Electronic Optical Characteristics (@ 350mA):

Part Number	Color	CCT(k)	CRI (%)	$\Phi_v$ (lm)		View Angle (2 $\theta$ 1/2)	VF(V)	
				Min.	Max.		Min.	Max.
VH 3535W619	White	5700	70	110	120	120	3.0	3.4

#### Absolute Maximum Ratings (at Ta=25°C)

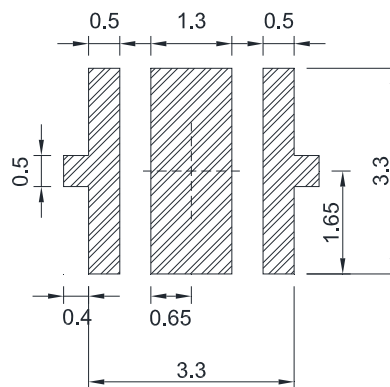
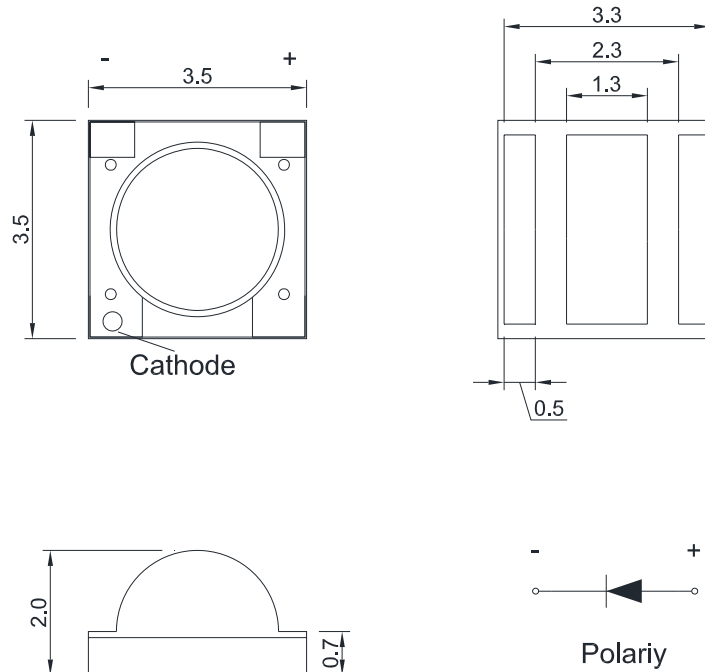
IFP(mA)	IF(mA)	Soldering Temperature(°C)	IR(uA)@VR=5V	Topr(°C)	Tstg(°C)
700*	350	260 for 5 seconds	50	-20~+80	-40~+80

Note: Please take note the Absolute Maximum Rating values. Any operation beyond the specify ratings in this table will result degradation of LED life-span and may cause LED to fail.

\* IFP: Peak Forward Current under 1/10 duty, 1KHz condition

## Package Dimension:

unit : mm



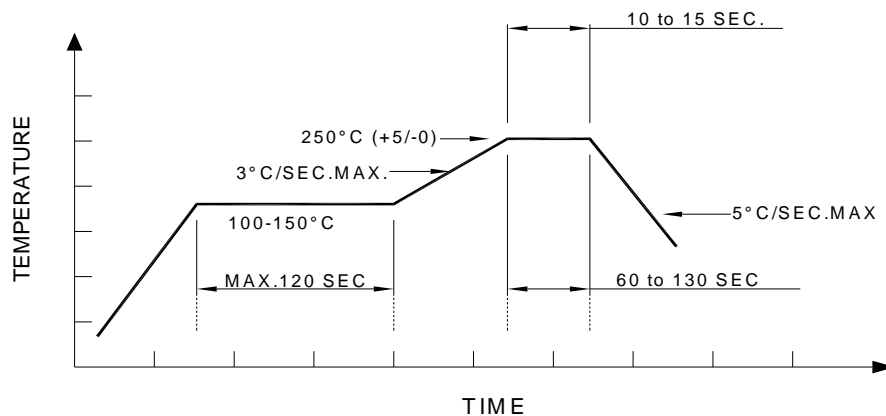
Recommend Soldering Pad

### Notes:

1. All dimensions are millimeters.
2. Dimensional tolerance is  $\pm 0.2\text{mm}$  unless otherwise specified.
3. Specifications are subject to change without notice.



**Recommended Pb-free re-flow soldering profile:**



**Note:**

All the specifications listed in this data sheet are suitable for general electronic equipment, office equipment and communication devices. Kindly consult Sales Representatives for specific reliabilities request, Forward Voltage, Luminous Intensity, Wavelength, Radiant Power or Viewing Angle.