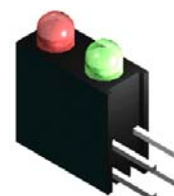


3mm Round LED Lamp Array 2 Pieces

VA 2J76

Main Features:

- ⊙ Low power consumption
- ⊙ Free combination on the color of LED lamps.
- ⊙ Excellent character appearance
- ⊙ Long life solid state reliability
- ⊙ Color diffused lens
- ⊙ AlGaInP technology
- ⊙ High luminous under low current driving condition





Applications

- Lighting indicator
- Status lights
- ON/OFF indicator
- Backlight illumination
- Front panel indicator



Electronic Optical Characteristics (at 20mA):

| Part Number | Emitted Color | λ (nm) | | Lens Color | Iv(mcd) | | View Angle (2 θ 1/2) | VF(V) | |
|-------------|---|----------------|-------------|------------|---------|------|-----------------------------|-------|------|
| | | λ d | λ p | | Min. | Typ. | | Typ. | Max. |
| VA 2J76 | Red  | 624 | 632 | Tinted | 35.5 | 65 | 60 | 2.0 | 2.4 |
| | Green  | 573 | 575 | Tinted | 28 | 54 | 60 | 2.0 | 2.4 |

Absolute Maximum Ratings at Ta=25°C

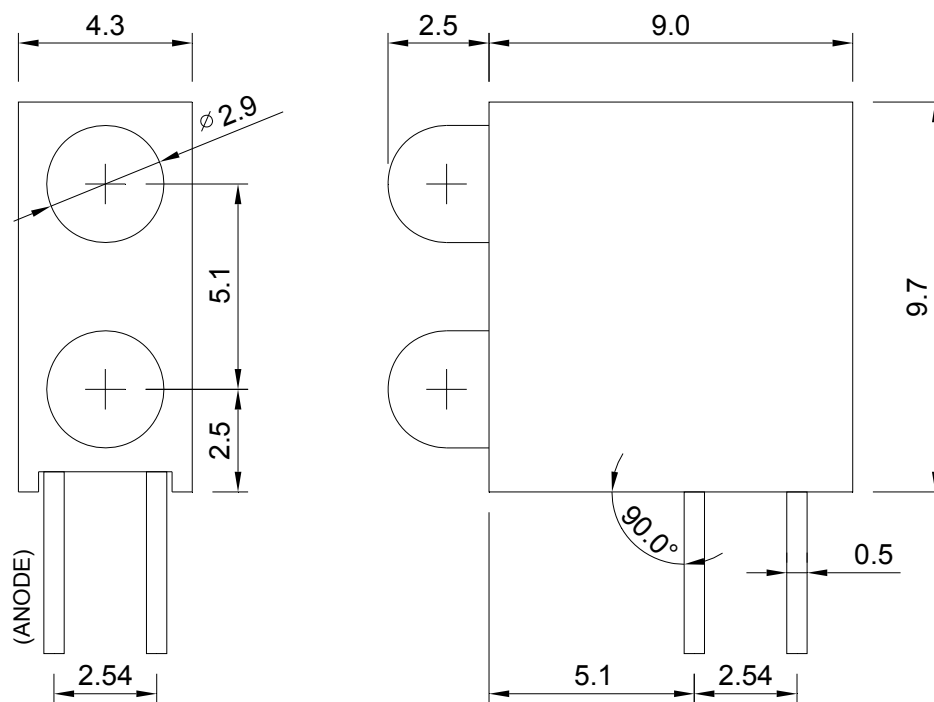
| Emitted Color | P _D (mW) | I _F (mA) | I _{FP} (mA) | T _{sol} (°C) | I _R (uA)@V _R =5V | T _{opr} (°C) | T _{stg} (°C) |
|---------------|---------------------|---------------------|----------------------|-----------------------|--|-----------------------|-----------------------|
| Red | 60 | 25 | 60 * | 260±5 | 10 | -40~+85 | -40~+100 |
| Green | 60 | 25 | 60 * | 10 sec | 10 | -40~+85 | -40~+100 |

Note: Please take note the Absolute Maximum Rating values. Any operation beyond the specified ratings in this table will result degradation of LED life-span and may cause LED to fail.

* I_{FP} = Peak Forward Current under 1/10 duty, 1KHz condition

Package Dimension:

unit: mm



Notes:

1. All dimensions are millimeters.
2. Dimensional tolerance is +/- 0.2mm unless otherwise specified.
3. Specifications are subject to change without notice.
4. Red LED at top position and green LED at bottom position