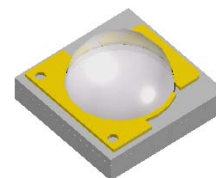


## High Power 3535 LED

### VH 353576T

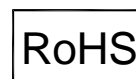
#### Description

These series high brightness red emitting LEDs are made from the most efficient AlGaInP technology in High driving current 350mA. The typical Optical efficiency output can be 50lm when driving at 350mA. Customized colors are available, from blue, green to yellow and red, view angles also available from 30, 60, 90 to 120 degree.




#### Applications

- Portable lighting
- Commercial lighting
- Outdoor lighting
- Industrial lighting



#### Electronic Optical Characteristics (at 350 mA):

Part Number	Emitted Color	$\lambda$ (nm)		Lens Color	Flux(lm)		View Angle (2 $\theta$ 1/2)	VF(V)	
		$\lambda_d$	$\lambda_p$		Min.	Typ.		Min.	Max.
VH 353576T	Red 	624	632	Clear	40	50	120	1.8	2.6

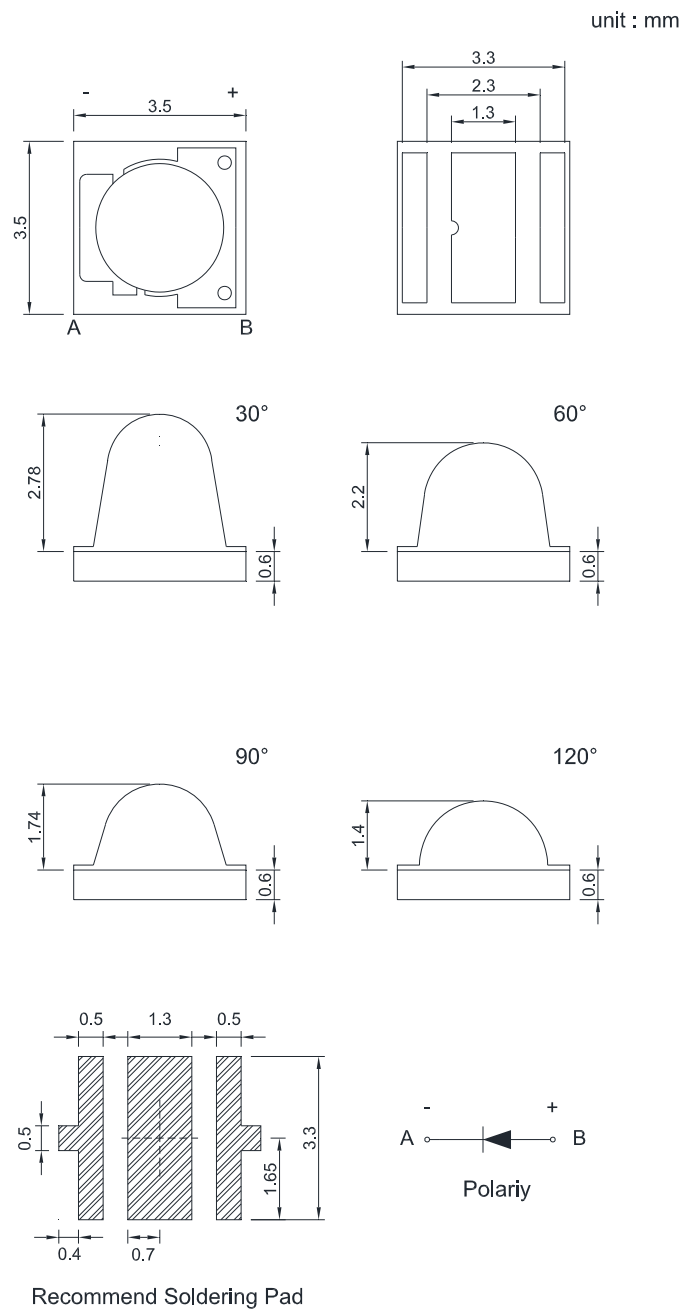
#### Absolute Maximum Ratings (at Ta=25°C)

IFP(mA)	IF(mA)	Soldering Temperature(°C)	IR(uA)@VR=5V	Topr(°C)	Tstg(°C)
700*	350	260 for 5 seconds	10	-20~+80	-40~+80

Note: Please take note the Absolute Maximum Rating values. Any operation beyond the specify ratings in this table will result degradation of LED life-span and may cause LED to fail.

\* IFP: Peak Forward Current under 1/10 duty, 1KHz condition

## Package Dimension:

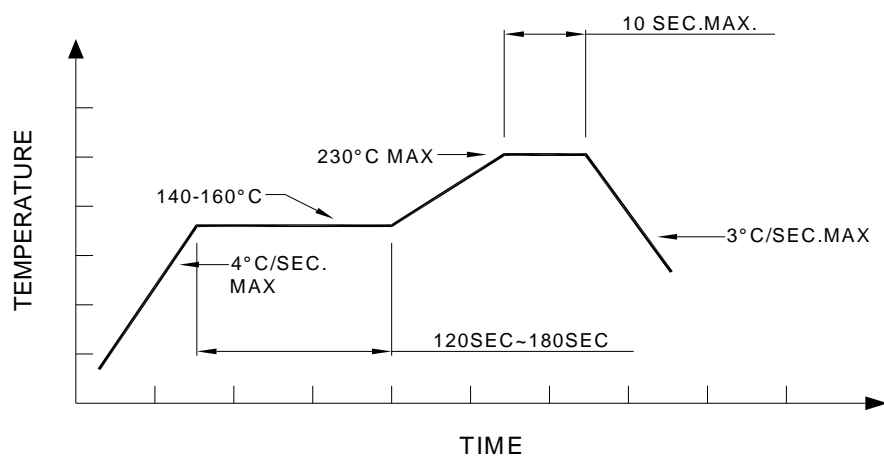


### Notes:

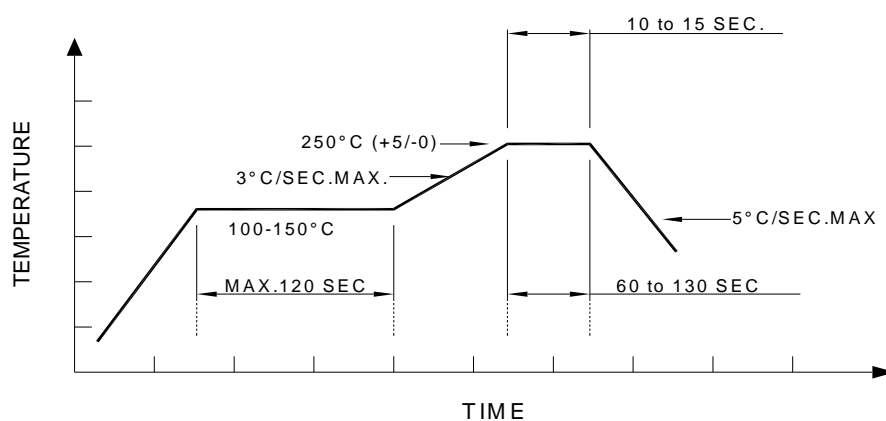
1. All dimensions are millimeters.
2. Dimensional tolerance is  $\pm 0.2$  mm unless otherwise specified.
3. Specifications are subject to change without notice.



### Recommended re-flow soldering profile:



### Recommended Pb-free re-flow soldering profile:



### Note:

All the specifications listed in this data sheet are suitable for general electronic equipment, office equipment and communication devices. Kindly consult Sales Representatives for specific reliabilities request, Forward Voltage, Luminous Intensity, Wavelength, Radiant Power or Viewing Angle.