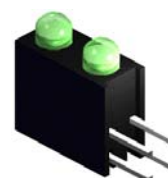


3mm Round LED Lamp Array 2 Pieces

VA 2576

Main Features:

- ⊙ Low power consumption
- ⊙ Free combination on the color of LED lamps.
- ⊙ Excellent character appearance
- ⊙ Long life solid state reliability
- ⊙ Color diffused lens
- ⊙ AlGaInP technology
- ⊙ High luminous under low current driving condition




Applications

- Lighting indicator
- Status lights
- ON/OFF indicator
- Backlight illumination
- Front panel indicator



Electronic Optical Characteristics (at 20mA):

| Part Number | Emitted Color | λ (nm) | | Lens Color | Iv(mcd) | | View Angle (2 θ 1/2) | VF(V) | |
|-------------|-------------------------------------------------------------------------------------------|----------------|-------------|------------|---------|------|-----------------------------|-------|------|
| | | λ d | λ p | | Min. | Typ. | | Typ. | Max. |
| VA 2576 | Green  | 573 | 575 | Tinted | 28 | 54 | 60 | 2.0 | 2.4 |

Absolute Maximum Ratings (at Ta=25°C)

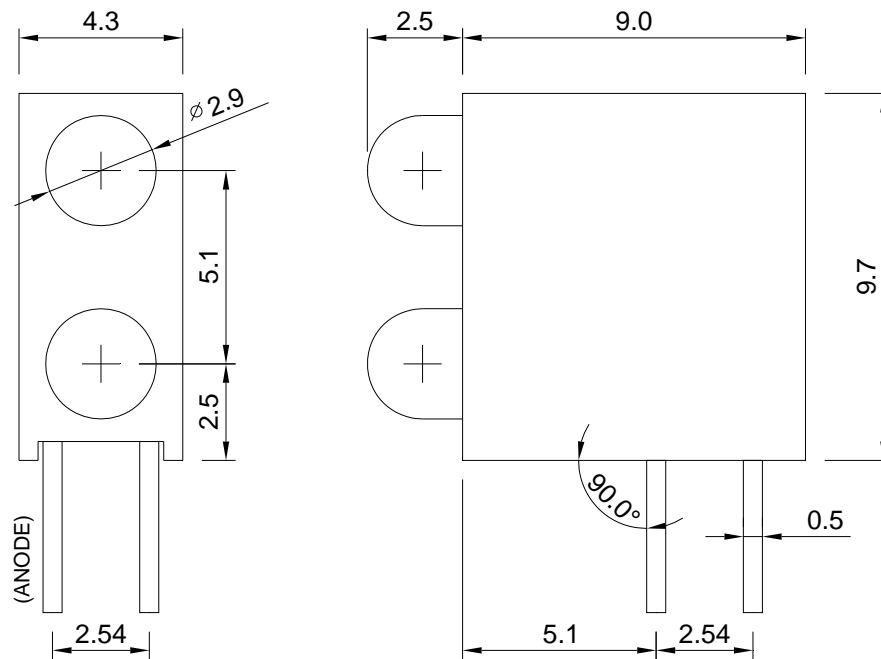
| P _D (mW) | I _{FP} (mA) | I _F (mA) | T _{sol} (°C) | I _R (uA)@V _R =5V | T _{opr} (°C) | T _{stg} (°C) |
|---------------------|----------------------|---------------------|-----------------------|----------------------------------------|-----------------------|-----------------------|
| 60 | 100* | 25 | 260 ± 5 for 5 sec. | 10 | -40~+85 | -40~+100 |

Note: Please take note the Absolute Maximum Rating values. Any operation beyond the specify ratings in this table will result degradation of LED life-span and may cause LED to fail.

* I_{FP}: Peak Forward Current under 1/10 duty, 1KHz condition

Package Dimension:

unit: mm



Notes:

1. All dimensions are millimeters.
2. Dimensional tolerance is +/- 0.2mm unless otherwise specified.
3. Specifications are subject to change without notice.