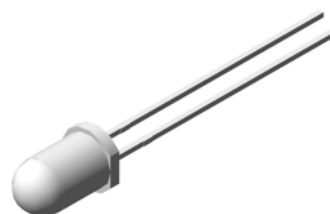


## 5mm Round Standard LED

### VT 5776.22

#### Description

The major breakthrough in VT 5776 series is made with GaAsP/GaP Hi-efficiency Red light emitting diode. All the lens type is green diffuse. Select transparent or water clear lens type gave different design possibilities. Other than Bulk packing, tape and reel is available. Changes in viewing angle, luminous intensity and lens color is acceptable.




#### Features

- High reliability LED package
- Available in full selection of colors
- Luminous intensity categorized for each bag
- GaP dice technology with color diffuse lens



#### Electronic Optical Characteristics (at 20mA):

Part Number	Emitted Color	$\lambda$ (nm)		Lens Color	Iv(mcd)		View Angle (2 $\theta$ 1/2)	VF(V)	
		$\lambda_d$	$\lambda_p$		Min.	Typ.		Typ.	Max.
VT 5776.22	Red 	625	635	Diffuse	4.5	12	40	2.0	2.4

#### Absolute Maximum Ratings (at Ta=25°C)

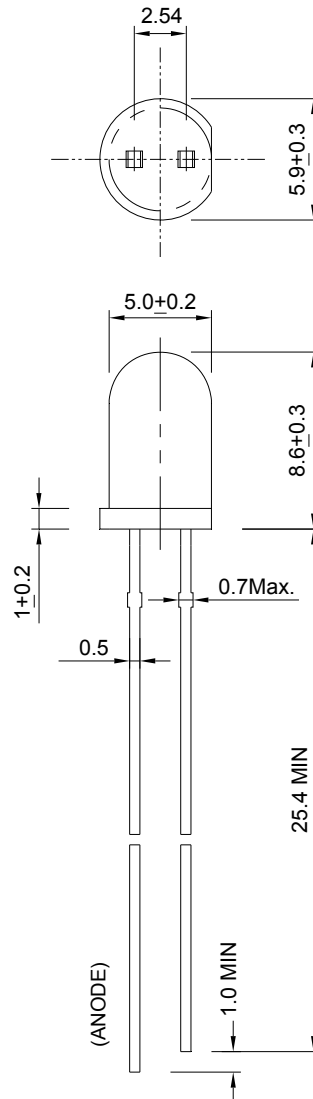
P <sub>D</sub> (mW)	I <sub>FP</sub> (mA)	I <sub>F</sub> (mA)	T <sub>sol</sub> (°C)	I <sub>R</sub> ( $\mu$ A)@V <sub>R</sub> =5V	T <sub>opr</sub> (°C)	T <sub>stg</sub> (°C)
60	100*	25	260 $\pm$ 5 for 5 sec.	10	-40~+85	-40~+100

Note: Please take note the Absolute Maximum Rating values. Any operation beyond the specify ratings in this table will result degradation of LED life-span and may cause LED to fail.

\* I<sub>FP</sub>: Peak Forward Current under 1/10 duty, 1KHz condition

## Package Dimension:

unit: mm



### Notes:

1. All dimensions are millimeters.
2. Dimensional tolerance is  $\pm 0.2$ mm unless otherwise specified.
3. Epoxy meniscus under flange is 1.5 mm max.
4. Specifications are subject to change without notice.

## Typical Electro-optical Characteristics Curves

