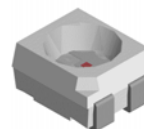


3528 SMD LED 50mA Operating

VR 78C8

Description

The constructive of this series of LEDs are different from the PCB type SMD LED. The lead-frame is of metal, reflector is made of thermoplastic and construct into this unique type of SMD LED. The wavelengths and Luminous Intensities of this series are grouped under 50mA for uniformity.




Applications

- Dashboards and switch
- Backlight keypads
- Industrial control systems signal indicator
- Automotive features
- Industrial panel



Electronic Optical Characteristics (at 50mA):

Part Number	Emitted Color	λ (nm)		Lens Color	Iv(mcd)		View Angle (2 θ 1/2)	VF(V)	
		λ_d	λ_p		Min.	Typ.		Min.	Max.
VR 78C8	Yellow-orange 	605	611	Clear	1200	1800	120	2.2	2.8

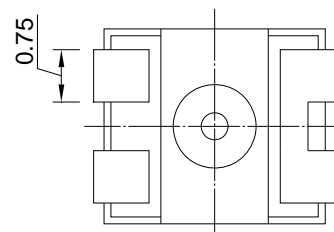
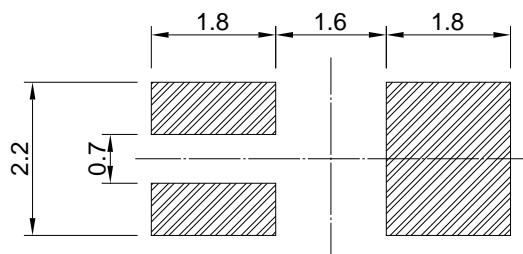
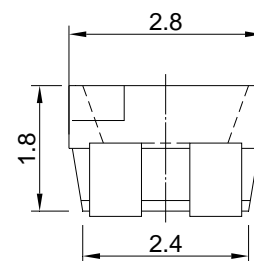
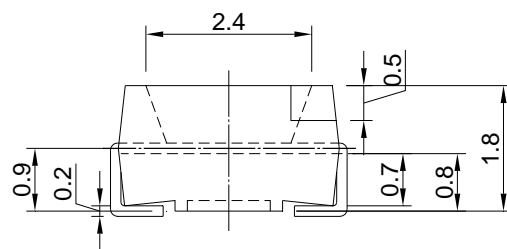
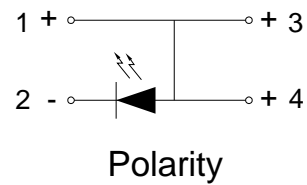
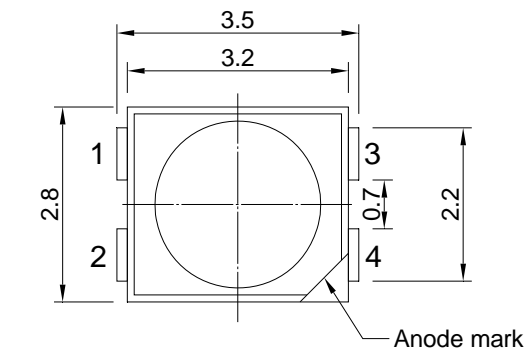
Absolute Maximum Ratings (at Ta=25°C)

P _D (mW)	I _F (mA)	I _{FP} (mA)	ESD(V)	I _R (μ A)@VR=5V	Topr(°C)	Tstg(°C)
220	70	150	2000	10	-40~+85	-40~+100

Note: Please take note the Absolute Maximum Rating values. Any operation beyond the specified ratings in this table will result degradation of LED life-span and may cause LED to fail.

Package Dimension:

unit:mm

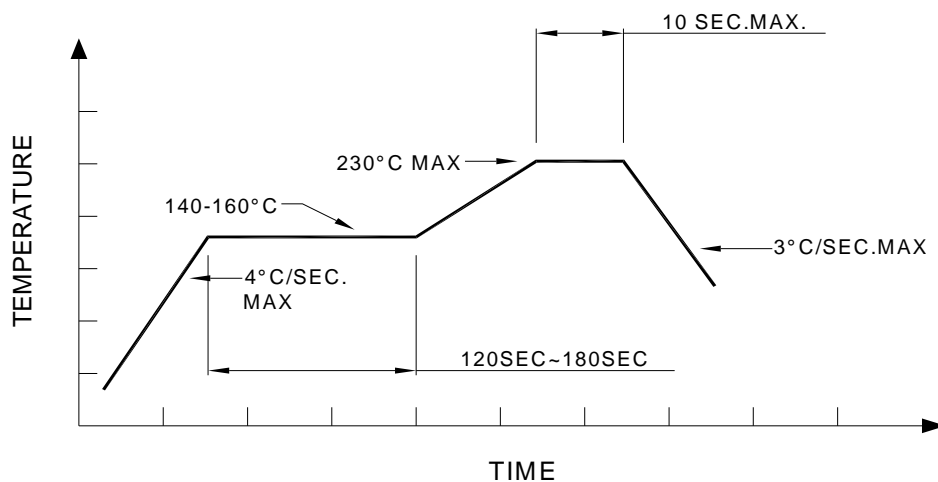


Recommended Soldering Pad

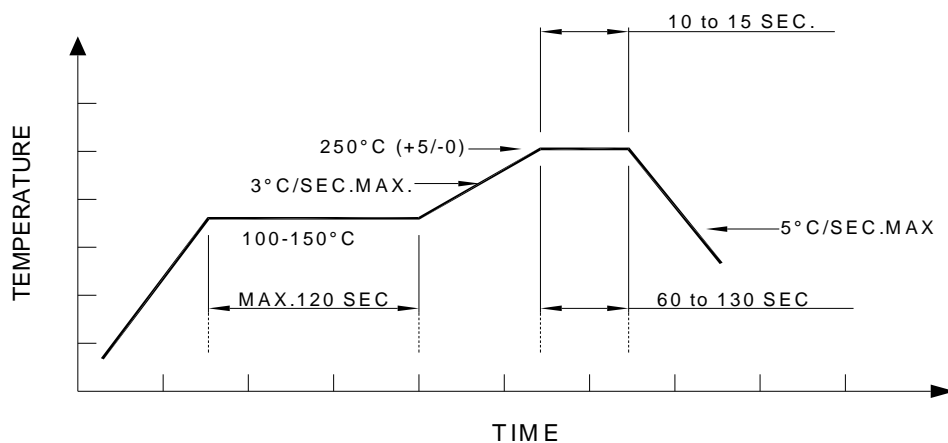
Notes:

1. All dimensions are millimeters.
2. Tolerance is $\pm 0.2\text{mm}$ unless otherwise specified.
3. Specifications are subject to change without notice.

Recommended re-flow soldering profile:



Recommended Pb-free re-flow soldering profile:



Note:

All the specifications listed in this data sheet are suitable for general electronic equipment, office equipment and communication devices. Kindly consult Sales Representatives for specific reliabilities request, Forward Voltage, Luminous Intensity, Wavelength, Radiant Power or Viewing Angle.